

HSE Update



Helping
Great Britain
work well

Find out more
by joining the
conversation



Mike Walters

HM Principal Inspector of Health & Safety

Building Safety & Construction Division

Group 17 – Surrey, Sussex & Kent

What to Expect from Today.....

- What HSE are up to locally in the south east
- What has been happening???
- What to expect in the future
- Questions!



My Construction Team



- Started managing Construction Team in March 2020.
- Hybrid team currently made up of 1 substantive Principal Inspector (PI), 1 temporary PI, 1 trained Inspectors, 5 trainee Inspectors and 2 trainee Visiting Officers. This equates to 9.4 FTE. Very heavy training workload.
- 3 fatal accidents across patch since April 2023
 - Worker falling through single storey roof
 - Worker falling off trestles
 - MOP crushed by plasterboards
- Work made up of:
 - Asbestos Inspections, Cladding Inspections, Health Campaigns (Dust & MSD), F10 visits, Training Visits, Concern Investigations & RIDDOR Investigations

My Construction Team



- Heavy reactive workload at present. Up to date – mid October 2023:
 - 93 Concern investigations handled
 - 42 RIDDOR investigations handled
 - 204 Construction Inspections
 - 16 Asbestos Inspections
 - 48 Prohibition Notices issued
 - 27 Improvement Notices issued



Kent FOD Group



- Again a heavy reactive workload at present. Up to date – mid October 2023:
 - 32 Concern investigations handled
 - 94 RIDDOR investigations handled
 - 336 Inspections [Includes 21 CD Visits]
 - 54 Prohibition Notices issued
 - 116 Improvement Notices issued





Guidance for Crown Prosecutors Interim COVID Reviews



- Guidance issued in April 2020 to assist Crown prosecutors
- All cases need to be reviewed in light of interim guidance
- Review to consider if still in the public interest to put a case through the Court system. Would a caution be suitable?
- I reviewed a number of existing cases and the decision to prosecute did not change
- Still a backlog of criminal cases in the Court system so guidance remains in place until CPS remove it



CD Team Prosecutions Heard Since April 2022



- Martin Hayes t/a Orchard Construction [Worker fell from scaffold]
 - £2,066 Fine & £,7500 total costs for Partnership [HSWA 1974, Section 3(2)]
- Timothy Hayes t/a Orchard Construction [Worker fell from scaffold]
 - £2,800 Fine & £7,500 total costs for Partnership [HSWA 1974, Section 3(2)]
- Total Contractors Ltd [Worker fell from ladder]
 - £210,000 Fine & £30,000 Costs [HSWA 1974, Sections 2(1) & 3(1)]
- Steven Wenham (Director of TC Ltd) [Worker fell from ladder]
 - Total of 5 years prison sentence & no costs (GNM – 5 years & H&S 18 months)
 - [GNM + HSWA 1974, Section 37(1) for Sections 2(1) & 3(1)]
- Southern Asphalt Ltd [Worker fell from ladder]
 - £120,000 Fine & £20,000 Costs [HSWA 1974, Section 3(1)]
- John Spiller (Director of SA Ltd) [Worker fell from ladder]
 - 15 months prison sentence & no costs [HSWA 1974, Section 37(1) for Section 3(1)]
- Zendrill Limited [Worker fell from scaffolding over roof]
 - £16,667 Fine & £6,767 Costs [WAHR 2005, Regulations 4(1)(a) & 6(3)]



CD Team Prosecutions Heard Since April 2022 contd



- Kent County Surfacing Limited [Worker received 17% burns]
 - £10,000 Fine & £7,333.42 Costs [CDM 2015, Regulation 15(8)]
- Paul Kiff t/a Roywood Contractors [Worker disabled with HAVS]
 - £1,150 Fine & £3,500 Costs [CoVaWR 2005, Regulation 6(1) & 7(1)]
- Andrew Hatto t/a Roywood Contractors [Worker disabled with HAVS]
 - £1,150 Fine & £3,500 Costs [CoVaWR 2005, Regulation 6(1) & 7(1)]



CD Team Prosecutions Forward Look



- Fines still tend to be reduced due to economic “hit” of COVID-19
- Cases now being heard face to face – preliminary hearings may still be virtual or a hybrid approach
- Cases now “Approved” by Lawyer in Legal Services Division

- More CD cases in the pipeline:
 - 1 x H&S case (company) awaiting sentencing – date TBC
 - 1 x H&S case (employee) awaiting trial – date TBC
 - 1 x H&S case awaiting trial in January 2024
 - Number of investigations ongoing including a number of fatal investigations still with the Police with Primacy.

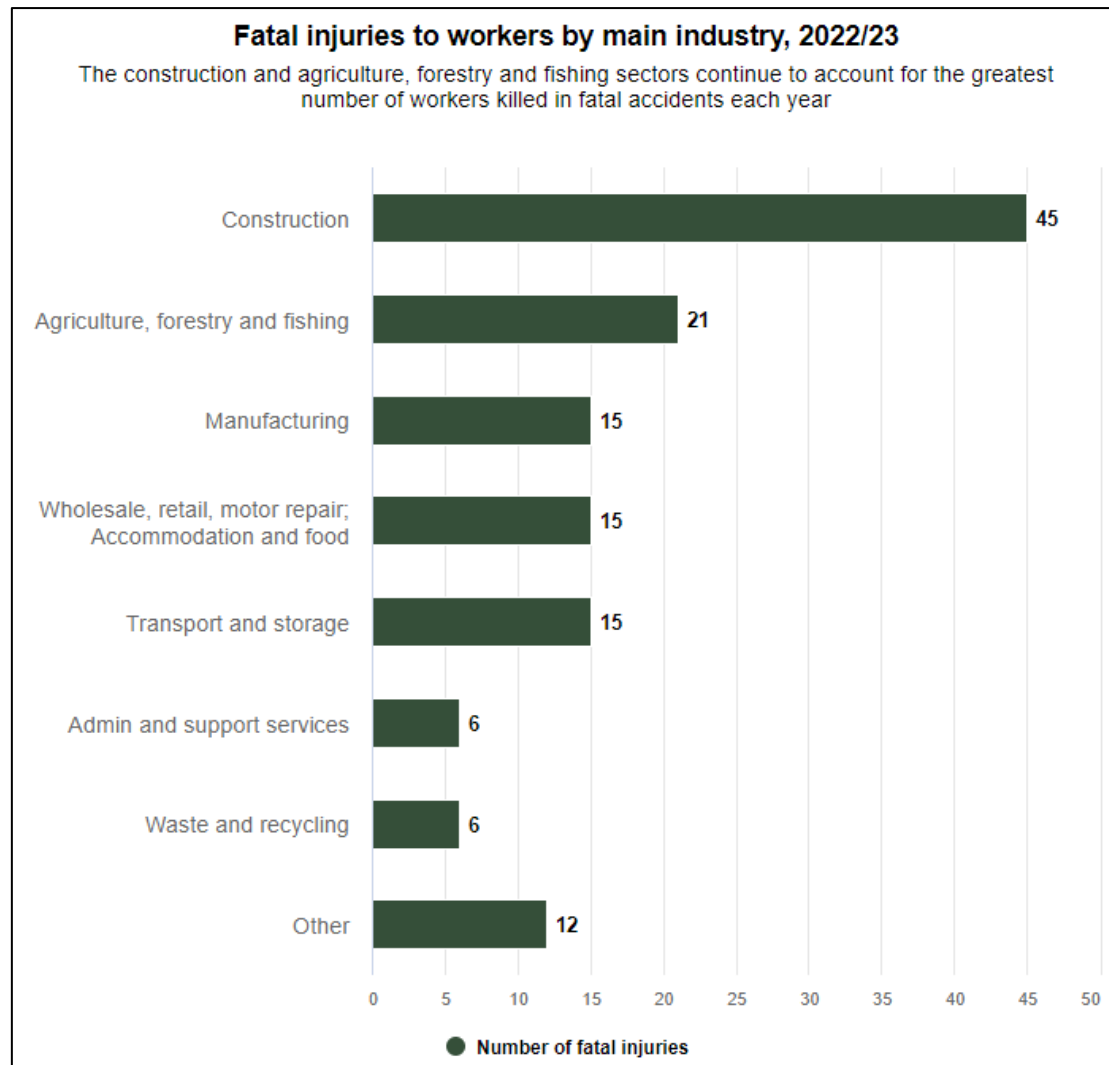
Minister responsible for HSE



- Mims Davies
- Started in post on 27 October 2022
- MP for Mid Sussex and was first elected in December 2019. She was previously Parliamentary Under Secretary of State at the Home Office between 20 September 2022 and 27 October 2022, and Parliamentary Under Secretary of State for Employment at the Department for Work and Pensions between 26 July 2019 and 6 July 2022.
- She was Parliamentary Under Secretary of State at the Department for Digital, Culture, Media and Sport from 5 November 2018 to 25 July 2019.
- She was previously Assistant Government Whip from January 2018 to November 2018, and Parliamentary Under Secretary of State for Wales from July 2018 to November 2018.

Fatal Statistics

#HelpGBWorkWell



HSE Statistics

#HelpGBWorkWell



Key facts

 **1.8 million**

Work-related ill health cases (new or long-standing) in 2021/22

Source: Estimates based on self-reports from the Labour Force Survey, people who worked in the last 12 months

 **36.8 million**

Working days lost due to work-related ill health and non-fatal workplace injury in 2021/22

Source: Estimates based on self-reports from the Labour Force Survey

 **0.6 million**

Workers sustaining a non-fatal injury in 2021/22

Source: Estimates based on self-reports from the Labour Force Survey

 **0.9 million**

Work-related stress, depression or anxiety cases (new or long-standing) in 2021/22

Source: Estimates based on self-reports from the Labour Force Survey, people who worked in the last 12 months

 **0.1 million**

Workers suffering from COVID-19 in 2021/22 which they believe may have been from exposure to coronavirus at work (new or long-standing)

Source: Estimates based on self-reports from the Labour Force Survey, people who worked in the last 12 months

 **123**


Workers killed in work-related accidents in 2021/22

Source: RIDDOR

 **0.5 million**

Work-related musculoskeletal disorder cases (new or long-standing) in 2021/22

Source: Estimates based on self-reports from the Labour Force Survey, people who worked in the last 12 months

 **0.6 million**

Workers suffering from a work-related illness caused or made worse by the effects of the coronavirus pandemic (new or long-standing) in 2021/22

Source: Estimates based on self-reports from the Labour Force Survey, people who worked in the last 12 months

 **12,000**


Lung disease deaths each year estimated to be linked to past exposures at work

Source: Counts from death certificates and estimates from epidemiological information

 **11.2 billion**

Annual costs of new cases of ill health in 2019/20, excluding long latency illness such as cancer

Source: Estimates based on HSE Cost Model

 **18.8 billion**

Annual costs of work-related injury and new cases of ill health in 2019/20, excluding long latency illness such as cancer

Source: Estimates based on HSE Cost Model

 **7.6 billion**

Annual costs of work-related injury in 2019/20

Source: Estimates based on HSE Cost Model

HSE Statistics

#HelpGBWorkWell



Health and safety at work
Summary statistics for Great Britain 2022



Work-related stress, depression or anxiety

914,000

Workers suffering from work-related stress, depression or anxiety (new or long-standing) in 2021/22

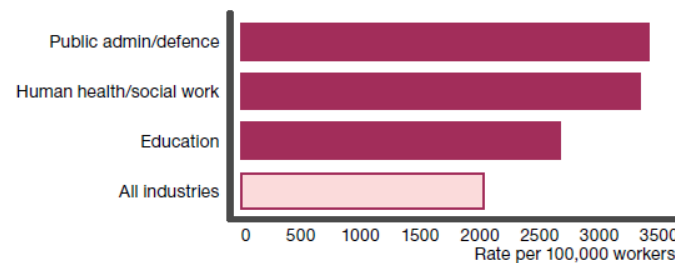
372,000

Workers suffering from a new case of work-related stress, depression or anxiety in 2021/22

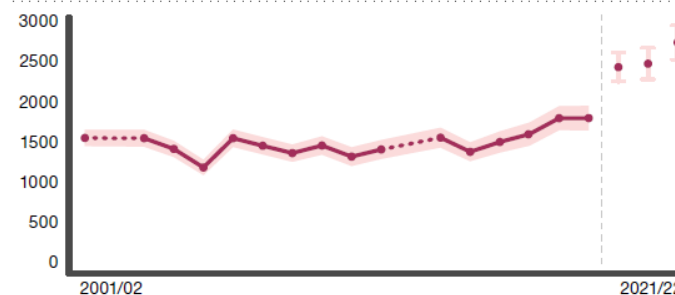
17.0 million

Working days lost due to work-related stress, depression or anxiety in 2021/22

Industries with higher-than-average rates of work-related stress, depression or anxiety, averaged 2019/20–2021/22



Rate of work-related stress, depression or anxiety per 100,000 workers: new and long-standing



Latest data includes the effects of the coronavirus pandemic, shown as a break in the time series

Shaded area and error bars represent a 95% confidence interval

No ill-health data collected in 2002/03 or 2012/13 represented by a dashed line

In the recent years prior to the coronavirus pandemic, the rate of self-reported work-related stress, depression or anxiety had shown signs of increasing. The current rate is higher than the 2018/19 pre-coronavirus levels.

Working days lost per worker due to self-reported work-related stress, depression or anxiety shows no clear trend.

In 2021/22, the effects of the coronavirus pandemic were found to be a major contributory factor to work-related stress, depression or anxiety.

Estimates of work-related stress, depression or anxiety based on self-reports from the Labour Force Survey (LFS)

To find out the story behind the key figures, visit <https://www.hse.gov.uk/statistics/causdis/stress.pdf>

HSE Statistics

#HelpGBWorkWell



Talking Toolkit benefits

This practical approach is designed to help simplify the risk assessment process and encourage employers, particularly small and medium-sized enterprises (SMEs), to:

- start a conversation with their employees to assist in identifying workplace stressors (risks);
- develop jointly agreed, practical solutions to help manage and prevent these stressors.

Download the toolkit at: www.hse.gov.uk/stress/assets/docs/stress-talking-toolkit.pdf

Time to Talk Day – 2 February 2023

<https://timetotalkday.co.uk/>

HSE Statistics

#HelpGBWorkWell

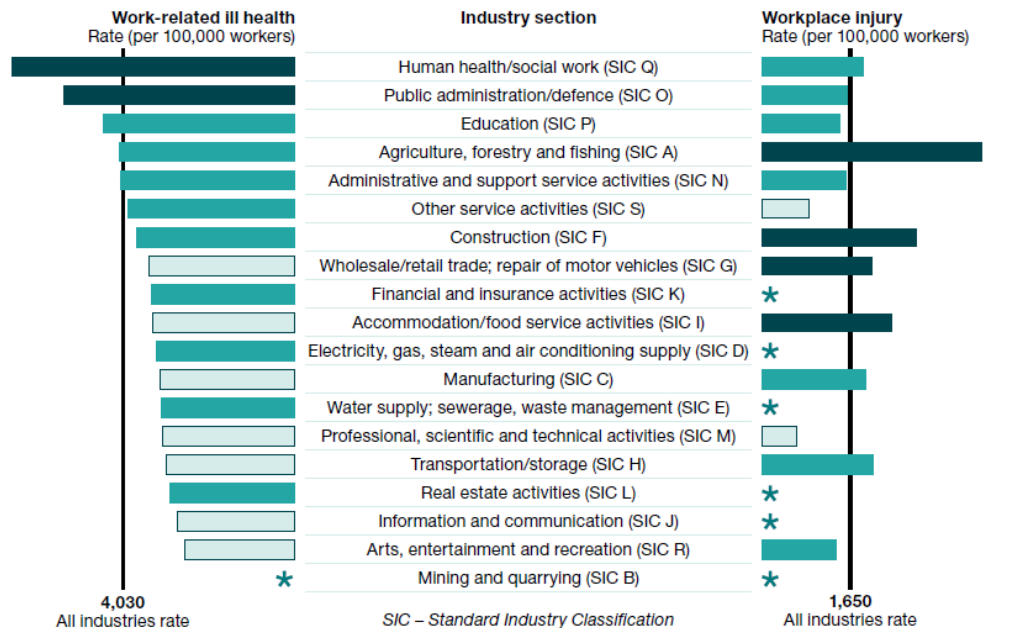


Health and safety at work
Summary statistics for Great Britain 2022



Industries

Rate of self-reported work-related ill health and non-fatal injury by industry



Compared to all industry rate:

- Statistically significant – higher
- No statistically significant difference
- Statistically significant – lower

* Indicates sample cases too small to provide reliable estimate

Industries with statistically significantly higher rates of work-related ill health compared to the average rate across all industries were human health and social work and public administration and defence.

Agriculture, forestry and fishing, construction, accommodation and food service activities and wholesale and retail trade (including motor vehicle repair) had statistically significantly higher workplace injury rates compared to the average rate across all industries.

To find out the story behind the key figures, visit www.hse.gov.uk/statistics/industry

Source: Labour Force Survey annual average estimate 2019/20-2021/22, restricted to ill health or injury in current or most recent job

Construction Division Health Inspection Campaign (Dust) May/June 2023



“Heavy” Use of Social Media (Twitter & Facebook)

Hashtags: #Dustbuster & #Workright

Over 1000 visits undertaken over 8/9 weeks

Looking at respiratory risks (RCS & Wood Dust)

www.hse.gov.uk/foi/internalops/og/og-00017.pdf

HSE ARE NOW IN YOUR AREA



ARE YOU COMPLIANT?

Find out more information: www.hse.gov.uk/construction

 Join the conversation at: SaferSites

 **HSE**

Health and Safety
Executive

Construction Division Health Inspection Campaign (Dust) May/June 2023



Construction Division Health Inspection Campaign (MSD) Sept/Oct 2023



“Heavy” Use of Social Media (LinkedIn, Twitter & FaceBook)

Aiming for 1000+ visits over 8/9 weeks

Looking at the moving & handling of materials

www.hse.gov.uk/foi/internalops/og/og-00126.pdf

Work Right Video: <https://youtu.be/kpfbJmOBJk>

HSE ARE NOW IN YOUR AREA

A yellow safety hard hat with the HSE logo and the letters 'HSE' printed on the front. The logo consists of a stylized figure with arms raised, set against a background of horizontal lines.

ARE YOU COMPLIANT?

Find out more information: www.hse.gov.uk/construction


Join the conversation at: SaferSites

HSE

Health and Safety
Executive


Construction Division Health Inspection Campaign (MSD) Oct/Nov 2022





Health and Safety Executive

Manual handling assessment charts (the MAC tool)



Introduction

Work-related musculoskeletal disorders (MSDs), including manual handling injuries, are the most common type of occupational ill health in the UK. It is important to remember that:

- there is a lot you can do to prevent them;
- preventative measures are often simple and cost-effective;
- you cannot prevent all MSDs, but where they occur, early reporting of symptoms, proper treatment and suitable rehabilitation are essential.

The Manual Handling Assessment Charts (MAC) is a tool aimed at employers, health and safety managers and safety representatives and is used by health and safety inspectors. The tool will help you assess the most common risk factors in lifting (and lowering), carrying and team handling operations and was developed to identify high-risk manual handling. It will point you towards the factors you need to modify to control these risks.

What does the law say?

The Manual Handling Operations Regulations 1992 set out a clear hierarchy of measures for dealing with risk likely to cause harm from manual handling. These are:

- avoid hazardous manual handling operations so far as reasonably practicable;
- assess any manual handling operations that cannot be avoided;
- reduce the risk of injury to as low as reasonably practicable.

Structure of the MAC

There are three types of assessment that can be carried out with the MAC:

- lifting operations (pages 3-7);
- carrying operations (pages 8-12);
- team handling operations (pages 13-17).

For each type of assessment there is an assessment guide and a flow chart. There is a score sheet to complete at the end of the tool.


When not to use the MAC

Using the MAC is not appropriate for:

- manual handling operations involving pushing and pulling (see the *Risk Assessment of Pushing and Pulling (RAPP)* tool);
- assessing people handling (see *HSE's The guide to the handling of people: A systems approach?*);
- assessing workplace risks associated with upper limb disorders (see *Assessment of Repetitive Tasks of the upper limbs (the ART tool)*).


Page 1 of 20

[Online MAC Tool](#)



Health and Safety Executive

Risk assessment of pushing and pulling (RAPP) tool



Introduction

This tool is designed to help assess the key risks in manual pushing and pulling operations involving whole-body effort, eg moving loaded trolleys or roll cages, or dragging, hauling, sliding or rolling loads.

It is intended to be used alongside the *Manual handling assessment charts (the MAC tool)* which helps assess lifting and carrying operations, and follows a similar approach to that tool. It is aimed at those responsible for health and safety in workplaces and will help you to identify high-risk pushing and pulling activities and check the effectiveness of any risk-reduction measures.

Structure of the tool

There are two types of pushing and pulling operations you can assess using this tool:

- moving loads on wheeled equipment, such as hand trolleys, pump trucks, carts or wheelbarrows (Section A);
- moving loads without wheels, which might involve actions such as dragging/sliding, churning (pivoting and rolling) and rolling (Section B).

For each type of operation there is a flow chart, an assessment guide and a score sheet.

The flow charts provide an overview of the risk factors and assessment process, while the assessment guides provide information to help you determine the level of risk for each factor.

The tool is **not** appropriate for assessing pushing and/or pulling operations involving:

- just the upper limbs, eg pushing buttons/knobs, pulling levers or moving loads which are on a conveyor (see *Upper limb disorders in the workplace HSG60*);
- just the lower limbs, eg pushing on pedals, or with the feet;
- powered handling equipment.

Use of the tool may not comprise a full risk assessment. HSE's guidance booklet *L23 Manual handling: Manual Handling Operations Regulations 1992: Guidance on Regulations* contains more information on conducting full risk assessments. Always consider individual and psychosocial issues when completing the RAPP score sheet.

INDG478
Published 2016

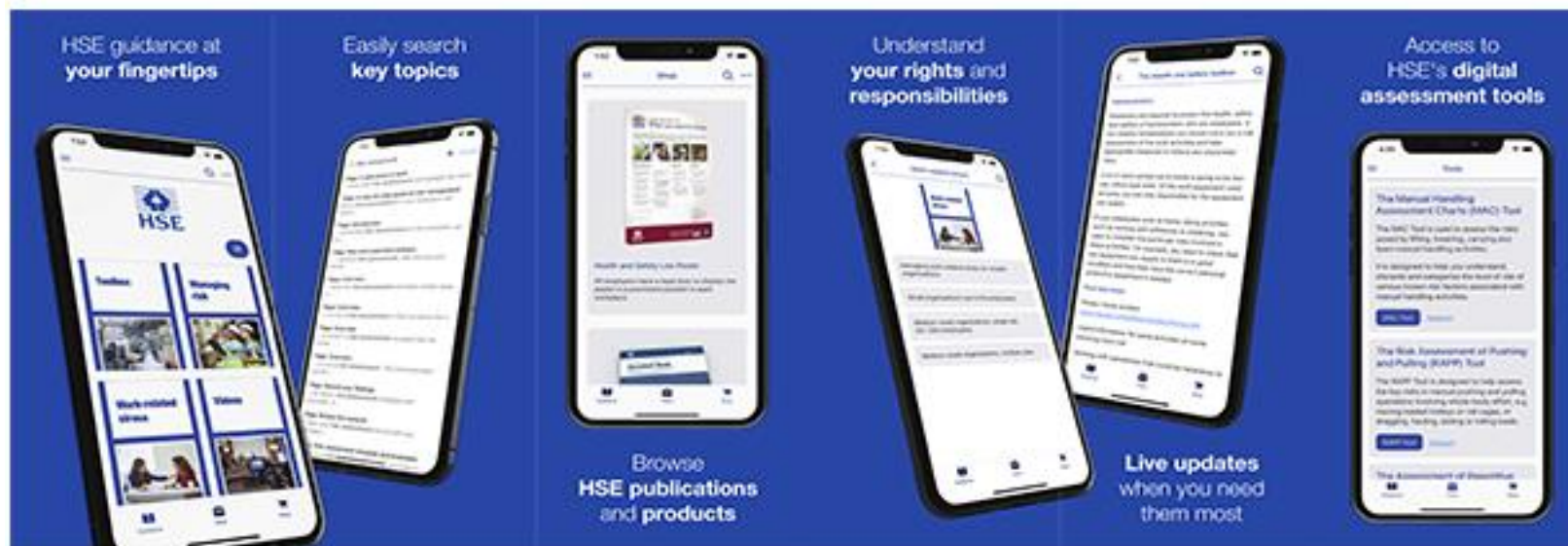
HSE Books

Page 1 of 15

[Online RAPP Tool](#)

Official HSE App [Free]

Guidance at your fingertips



HSE guidance at your fingertips

Easily search key topics

Browse HSE publications and products

Understand your rights and responsibilities

Live updates when you need them most

Access to HSE's digital assessment tools



https://youtu.be/BNcl_IHpPPs

Fee for Intervention - Receipts

- Invoiced a total of 14.292M in 2022/23
 - £13.342M in 2021/22
 - £8.655M in 2020/21 (COVID)
- Actual cost of work £14.137M (£155K surplus)



Grenfell: Next steps.....

- Consultation completed on 31 July 2019 on “Building a Safer Future”
 - <https://www.gov.uk/government/consultations/building-a-safer-future-proposals-for-reform-of-the-building-safety-regulatory-system>
- This followed the “Hackitt Review”
 - <https://www.gov.uk/government/collections/independent-review-of-building-regulations-and-fire-safety-hackitt-review>
- Building Safety Regulator
 - Only applies to England
 - Building Safety Act 2022
 - Enacted 28 April 2022
 - Explanatory Notes
 - Competency based system
 - People moving into “BSR” roles

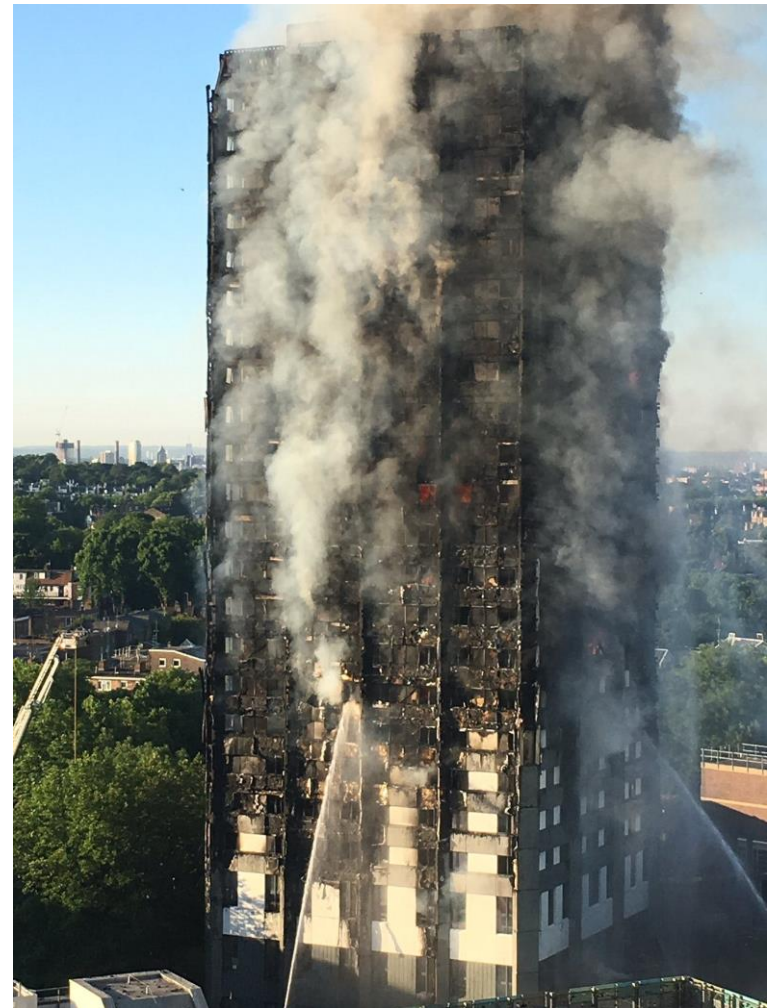


Photo: © Archinect News

Building Safety Regulator (BSR)

Building safety

Building safety reforms

The Building Safety Act names HSE as the new Building Safety Regulator. It also introduces new duties relating to fire and structural safety. The new duties, and BSR's services, will become operational over the next few years. These pages explain what we're doing to set up BSR, and what you can do to prepare for your new duties.

[Building Safety Regulator \(BSR\)](#)

At the heart of the building safety reforms is the creation of the Building Safety Regulator (BSR) in England

[What we are doing to prepare](#)

HSE is preparing for the new regulatory framework

[Consultations](#)

Have your say on some of the new building safety laws

[Design and construction](#)

These phases support the building control function

[Managing occupied buildings](#)

When people are living in the building, BSR will regulate new dutyholders

[Residents](#)

Information for residents about BSR, how to get involved and where to get advice

[New roles and responsibilities](#)

New roles, responsibilities and dutyholders

[Planning application](#)

Fire safety and the planning application process

[Safety cases and safety case reports](#)

Identify and manage your building's major fire and structural hazards

[Guidance on fire safety](#)

HSE's health and safety toolbox on fire safety

Subscribe to the free BSR eBulletin

www.hse.gov.uk/building-safety/index.htm

► [Sign up to get the latest news and alerts on the building safety reforms](#)

BSR Campaign Site



BE READY.

STEP UP.

ACT NOW.

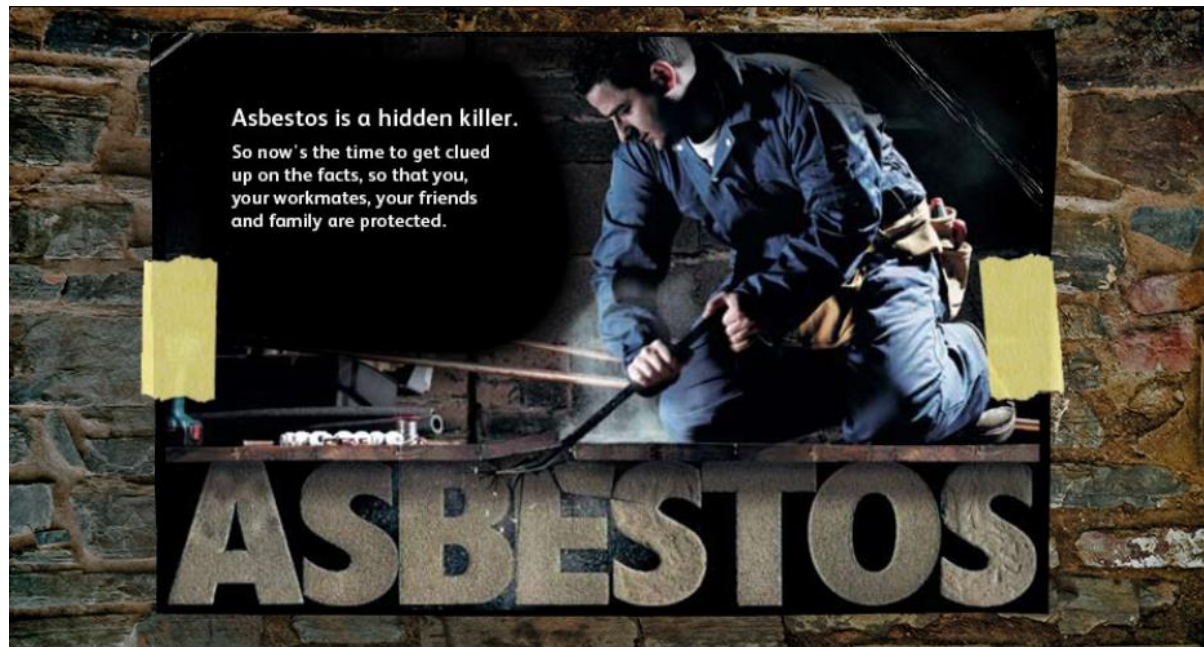
The Building Safety Act 2022 brings in new roles and responsibilities to make high-rise residential buildings in England safer. Be ready for these changes so you can play your part.

[BSR Campaign Website](#)

Control of Asbestos Regulations 2012



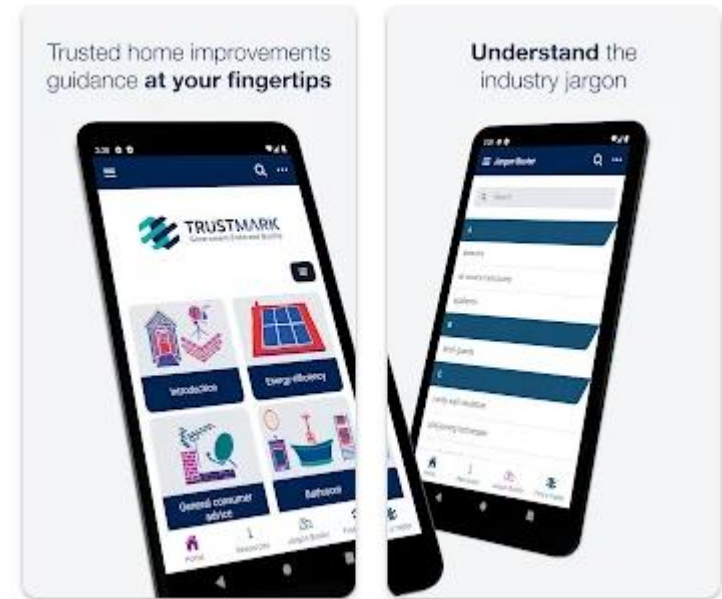
- Post Implementation Review (PIR) of the Control of Asbestos Regulation 2012
 - Regulations “Fit for Purpose” as deemed by the Regulatory Policy Committee (RPC). Next PIR in 2027



TrustMark: Home Improvements App [Free]



The App is designed to assist in broadening consumers' knowledge and confidence in dealing with and asking questions of tradespeople, particularly when this may be their first experience doing so. This should also help to drive-up professional standards and Health and Safety practices amongst tradespeople.



Key Guidance Released Recently



- Updated “Fire Safety in Construction” [HS(G)168]
 - www.hse.gov.uk/pubns/priced/hsg168.pdf
- Updated guidance on welfare on Construction Sites
 - www.hse.gov.uk/foi/internalops/og/og-00002.pdf
- Safety Alert: Mast Climbing Working Platforms
 - www.hse.gov.uk/safetybulletins/mast-climbing-work-platforms-mechanical-failure.htm
- Moving & Handling Materials in Construction
 - www.hse.gov.uk/foi/internalops/og/og-00126.pdf

Industry Challenges.....



Skills shortage exacerbated by people leaving the industry due to poor conditions and ill health

Urgent need for industry to innovate and adopt new technology to improve efficiency and reduce project risk

Demands from net zero agenda to retrofit building stock leading to increased site risks

Impact of post-pandemic mental health and well being crisis

Creation of new building safety regulatory framework

Inspector Training

- Had Spring & Autumn intakes during 2023 – latest started on 16.10.2023!
- Recruitment campaigns running now looking for trainees to start in Spring 2024. Applications just closed.
- 15 trainees currently within my Unit in Construction Division
- Heavy training load for the next few years
- Level 7 Post Graduate Diploma (in-house) – accredited by NEBOSH
- Training to inspect, investigate & enforce: Practical, vocational training

Join HSE on Social Media



- Follow HSE on:



<https://www.facebook.com/hsegovuk/>



https://www.twitter.com/H_S_E



<https://www.linkedin.com/company/health-and-safety-executive>



<https://www.youtube.com/user/healthandsafetyexec>

Going forward.....



- Proactive visits to sites (F10s & local knowledge)
- Assessment of compliance continues to be based more on health issues
- Cladding & Asbestos visits
- Mandatory RIDDOR investigations
 - www.hse.gov.uk/enforce/incidselcrits.pdf
- Concern investigations
- Intelligence from other Agencies
- Health Inspection Campaigns
- Training new Trainee Inspectors!
- 1 November 2023.....



Any questions?

